

DATA CENTER COOLING HOSE

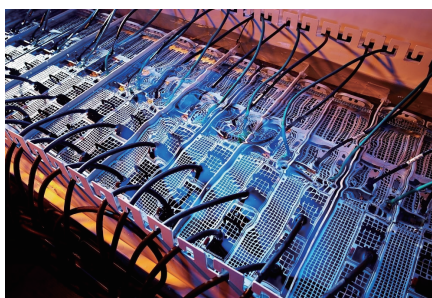
DC

2 Textile Spiral



TUBE : BLACK SPECIAL INSULATION SYNTHETIC RUBBER.
 REINFORCEMENT : 2 HIGH TENSILE SYNTHETIC TEXTILE SPIRAL.
 COVER : FLAME, INSULATION AND WEATHER RESISTANT SYNTHETIC RUBBER.
 APPLICATION : FOR CONVEYING DEIONIZED WATER, ETHYLENE GLYCOL, WATER, ETC.
 TEMPERATURE RANGE : -40°C~+135°C / -40°F~+275°F

TYPE	SIZE		ID (mm)		OD (mm)		WP		BP		BR/r	W	L
	Dash Size	inch	min	max	min	max	bar	psi	bar	psi	mm	g/m	max/m
DC-05	-3	3/16	4.5	5.5	10	12	34	493	136	1972	50	160	50/100
DC-06	-4	1/4	5.9	6.9	11	13	28	406	112	1624	65	180	50/100
DC-08	-5	5/16	7.5	8.5	13	15	28	406	112	1624	80	270	50/100
DC-10	-6	3/8	9.3	10.3	15	17	28	406	112	1624	80	310	50/100
DC-13	-8	1/2	12.5	13.5	18.3	20.3	28	406	112	1624	100	450	50/100
DC-16	-10	5/8	15.6	16.5	21.6	23.6	24	348	96	1392	125	530	50/100
DC-19	-12	3/4	18.9	19.9	25	27	21	305	84	1218	150	720	50/100
DC-25	-16	1	19.9	25.9	32	34	17	247	68	986	200	900	50/100
DC-32	-20	1-1/4	31.5	32.5	42	44	14	203	56	812	230	1070	50/100
DC-38	-24	1-1/2	37.5	38.5	48	50	14	203	56	812	250	1200	50/100
DC-51	-32	2	50.5	51.5	61	63	14	203	56	812	350	1380	50/100



MARKING / INT JET

Wojun DATA CENTER COOLING HOSE(**)(DN**mm) W.P.**BAR/**PSI *Q/***(YEAR)

COLOUR	BLACK	RED	BLUE	YELLOW	GREEN